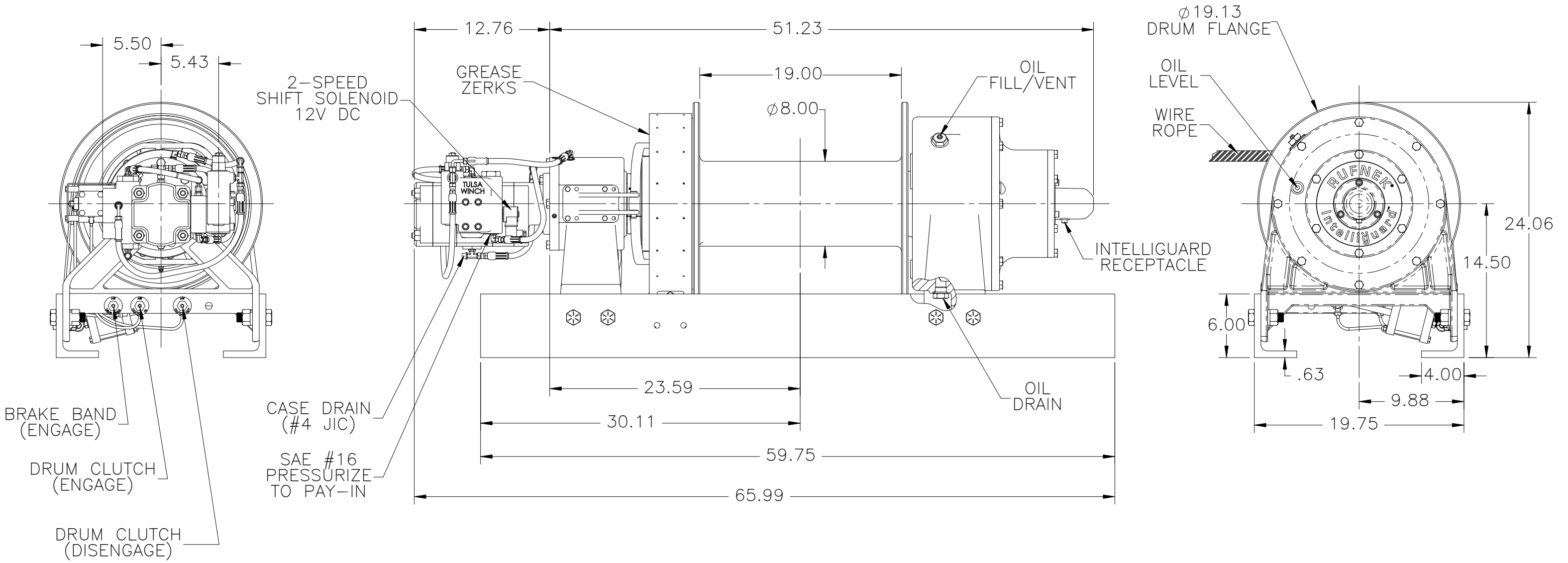


REV.	DESCRIPTION	DATE	DRAWN	APPD.
1	TO UPDATE PERFORMANCE	4/8/2013	CR	

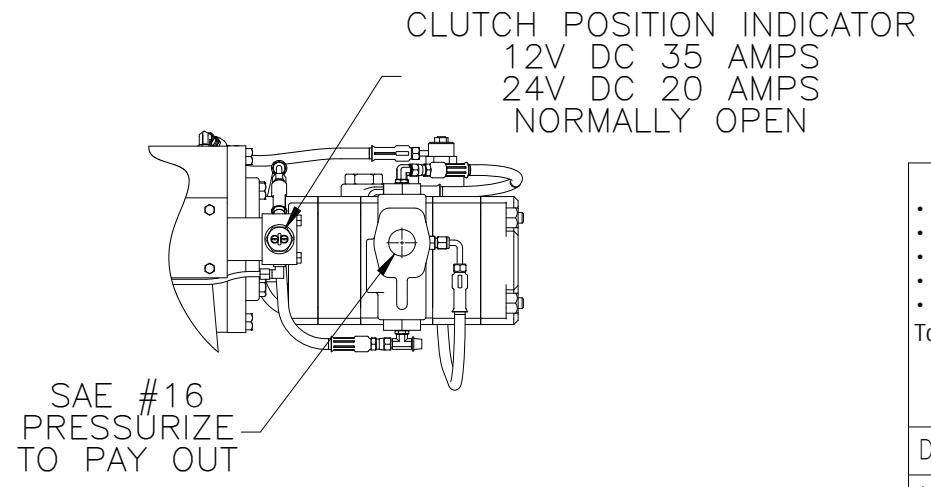
NOTES:

1. GEARBOX FILLED WITH DELVAC 75W-90 SYNTHETIC OIL (7.25 QTS)
2. THE BRAKE IS LUBRICATED & COOLED WITH THE OIL IN THE GEARBOX.
3. UNIT PRIMED WITH GRAY PRIMER
4. INTELLIGUARD SYSTEM SHIPPED AND CALIBRATED WITH WINCH



WINCH PERFORMANCE SPECIFICATIONS

PRESSURE: 2,600 PSI		CABLE DIA.: 1"			
LAYER	WINCH PERFORMANCE LOW SPEED 60 GPM	WINCH PERFORMANCE HIGH SPEED 60 GPM	TOTAL DRUM CAPACITY (FT)		
	STALL LINE PULL (LBS)	WINCH SPEED (FPM)	STALL LINE PULL (LBS)	WINCH SPEED (FPM)	
FIRST	65,000	31	29,576	69	40
SECOND	52,237	38	24,199	84	89
THIRD	45,047	45	20,476	99	148
FOURTH	39,041	52	17,746	114	215



UNLESS OTHERWISE SPECIFIED

- All dimensions are in inches
- Inside corner radii .03"
- Outside chamfer .03 X 45°
- Remove all burrs, break sharp edges
- Fastener torque per EN11000

Tolerances: Fractions ±1/32 Angles ±1/2°
 3 Place Decimal ±.010 Concentricity .010 TIR
 2 Place Decimal ±.030 Machine Finish 125✓

DO NOT SCALE DRAWING

DRAWN BY: DB DATE: 11-13-12
 APPD. BY: DATE:

This drawing is the property of TWG. Reproduction or the divulging of data hereon is not permitted without specific approval of TWG.

TWG

RN65P INSTALLATION

B MATERIAL DRAWING NO. **I82439001** REV 1

WT APPROX. 1320 HEAT TREAT SHEET